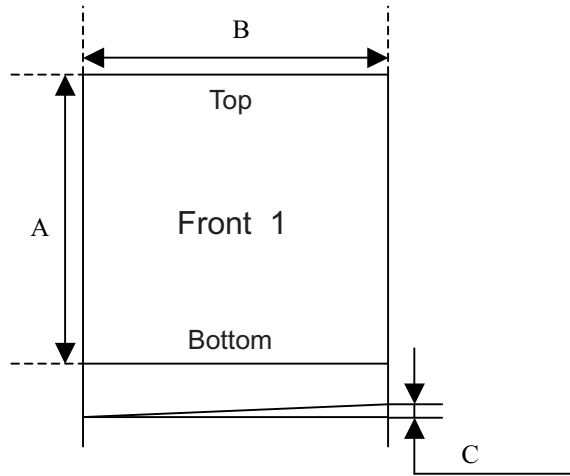
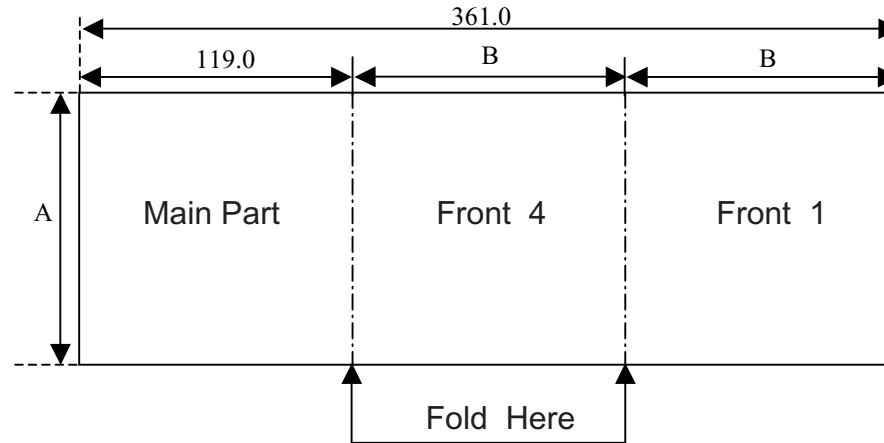


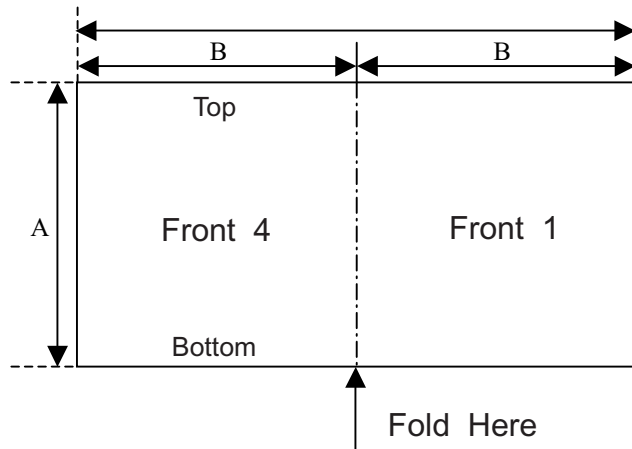
TYPE1 ( 1 sheet )



TYPE3 ( folded in three )



TYPE2 ( half fold )



Unit : mm

	TYPE1 ( 1 sheet )	TYPE2 ( half fold )	TYPE3 ( folded in three )
A	$119.5 \pm 0.5$	$119.5 \pm 0.5$	$119.5 \pm 0.5$
B	$121.0 + 0/-1.0$	$121.0 + 0/-1.0$	$121.0 + 0/-1.0$
C	—	less than 1.8	less than 1.8

TYPE1 assembling is done by hand.

Based on the standard of Recording Industry Association of Japan.